

Scott
kitchen collection

Prestige[®]
TIMELESS INTERIORS

*Atmosfere eleganti e raffinate.
Una cucina ispirata dall'amore per
le lavorazioni d'ebanisteria e un'eco
sorprendentemente moderna.*

*An elegant and refined environment.
A kitchen inspired by our love
for cabinet-making and
the surprisingly modern eco.*



*Tenendo fede alla sua filosofia
e alle competenze artigiane,
Prestige arricchisce il catalogo
con una cucina con inserti in ebano
dal carattere moderno e raffinato.*

*By maintaining their belief in philosophy
and artisan skills, Prestige enrich their
catalogue with a kitchen with ebony inserts
defined by a modern and refined personality.*



Il forte impatto estetico viene esaltato dal volume architettonico, quasi scultoreo, delle ampie armadiature di contenimento.
The strong aesthetic impact is enhanced by the almost sculptural architectural volume of its large containment cabinets.

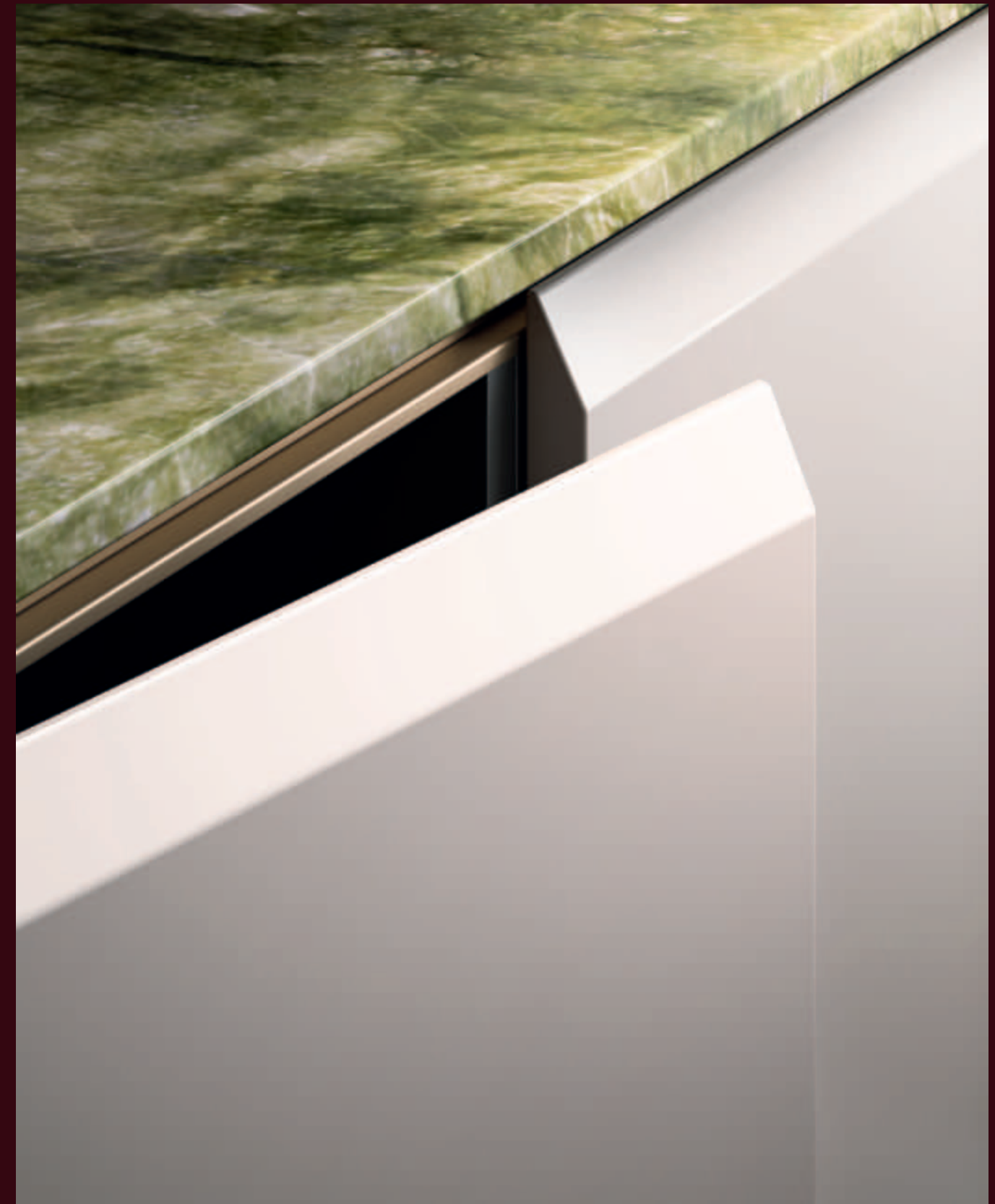


*Il lusso Made in Italy
in ogni particolare.*

*Made in Italy luxury
in every detail.*

Gli spessori del legno e l'altissima qualità costruttiva parlano di un'anta unica, concepita come un elemento progettuale realizzato con maestria senza tempo.

The thickness of the wood and the high architectural quality describe a single door, conceived as a design element made with timeless craftsmanship.



Più che un'anta, una realizzazione artigianale che mostra la bellezza autentica del legno nella sua lavorazione.
It's more than a door, it's a handcrafted creation which shows the authentic beauty of wood in its processing.

La particolare combinazione di maniglie e gole è l'elemento protagonista del design della cucina Scott.
Il loro inusuale accostamento cela un'incredibile praticità.
The particular combination of handles and grooves is the main element of the Scott kitchen design.
Their unusual union hides incredible practicality.




*Cucinare, mangiare, condividere.
La cucina è l'anima della casa, la stanza
in cui sapori e persone si incontrano.*

*Cooking, eating, sharing. The kitchen is the soul
of your house, the room where flavours
and people meet.*

L'ecclettismo della zona cottura coniuga alla perfezione
bellezza estetica e funzionalità per una cucina pratica,
flessibile e allo stesso tempo elegante, raffinata.

The eclecticism of the cooking area perfectly combines
aesthetic beauty and functionality for a practical, flexible
and at the same time elegant and refined kitchen.

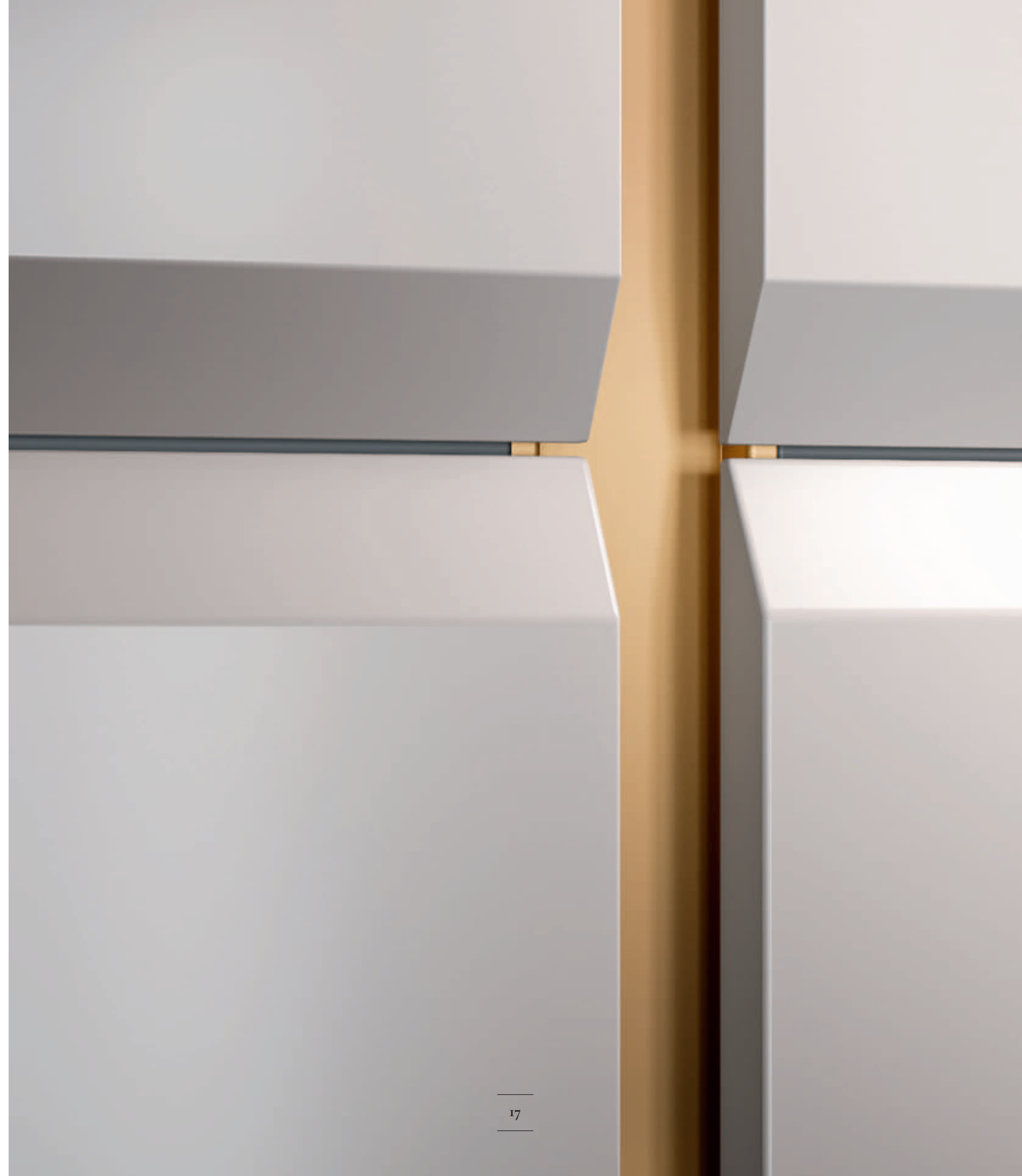
A photograph of a modern kitchen featuring light-colored, possibly white or light beige, cabinetry with a subtle texture. The cabinets are arranged in a row, with a dark wood countertop visible at the top. The floor is made of light-colored wood with a herringbone pattern. The lighting is soft and even, highlighting the clean lines and materials of the kitchen.

*Dettagli sofisticati,
realizzati con maestria
e finezza.*

*Sophisticated details,
made with skill and finesse.*



Nel design della cucina Scott gole verticali e orizzontali convivono in un progetto che va oltre la standardizzazione lasciando spazio a infinite possibilità di realizzazione.
In the Scott kitchen design, vertical and horizontal grooves coexist in a project that goes beyond standardization, allowing space for creating infinite possibilities.



*Un'eleganza preziosa interpreta
spazi esclusivi.*

*Precious elegance interprets
exclusive spaces.*

Caratterizzata da un'apparente semplicità costruttiva e da un forte senso per le proporzioni, la cucina Scott rivela tutto il suo fascino abbinata al tavolo e alle sedie della collezione Capricci.

The Scott kitchen is characterized by an apparent simplicity of construction and a strong sense of proportion. The kitchen reveals all its charm when combined with the table and chairs of the Capricci collection.





La struttura elegante e solida, frutto di un approccio tipicamente artigiano, è moderna nello stile.
The elegant and solid structure has a modern style which is the result of a typical artisan approach.

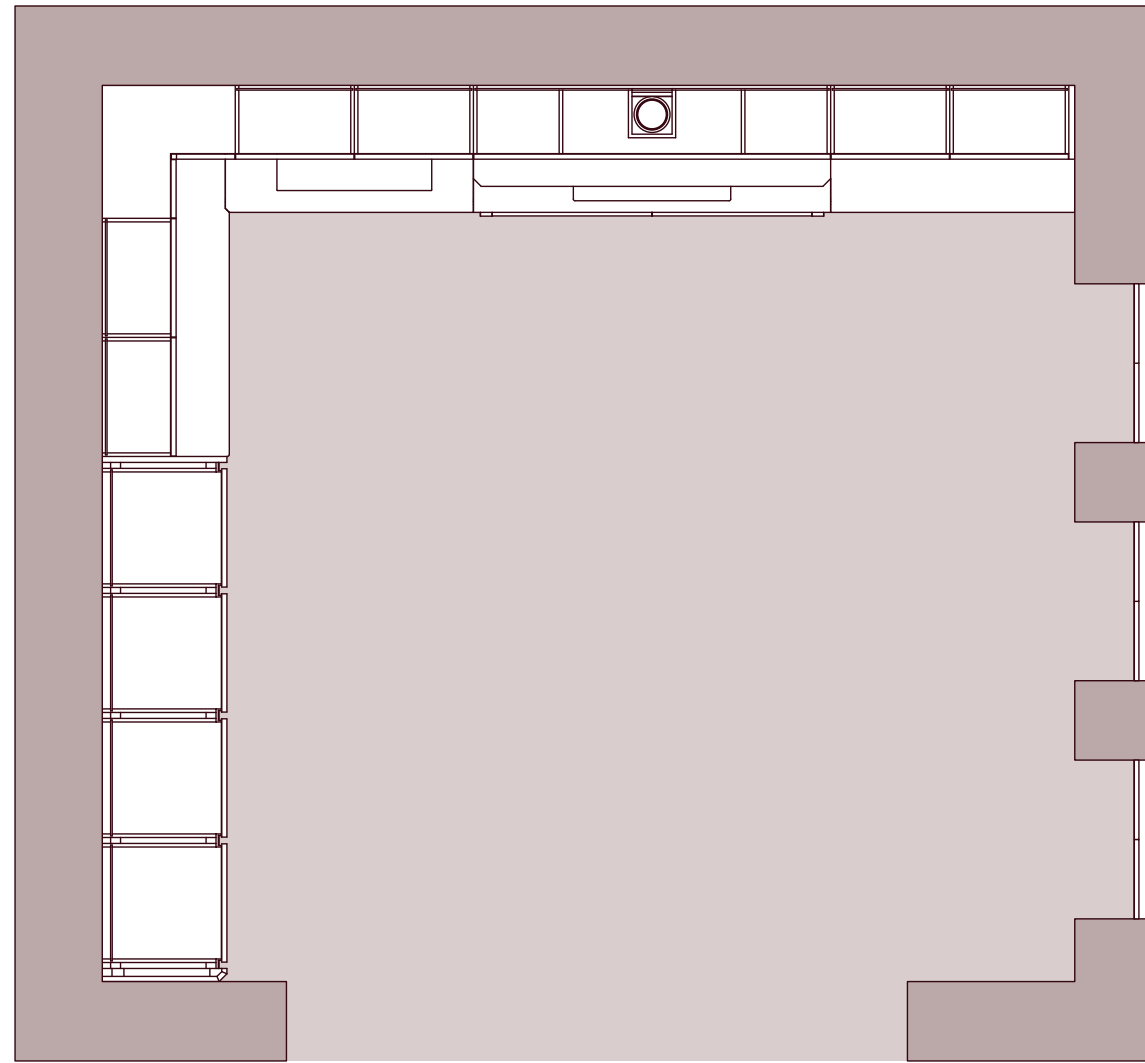


Le maniglie in ottone con dettagli satinati sono un particolare di grande pregio che enfatizza la zona più viva della cucina.
The brass handles with satin details are an extremely-valuable characteristic that emphasizes the liveliest area of the kitchen.



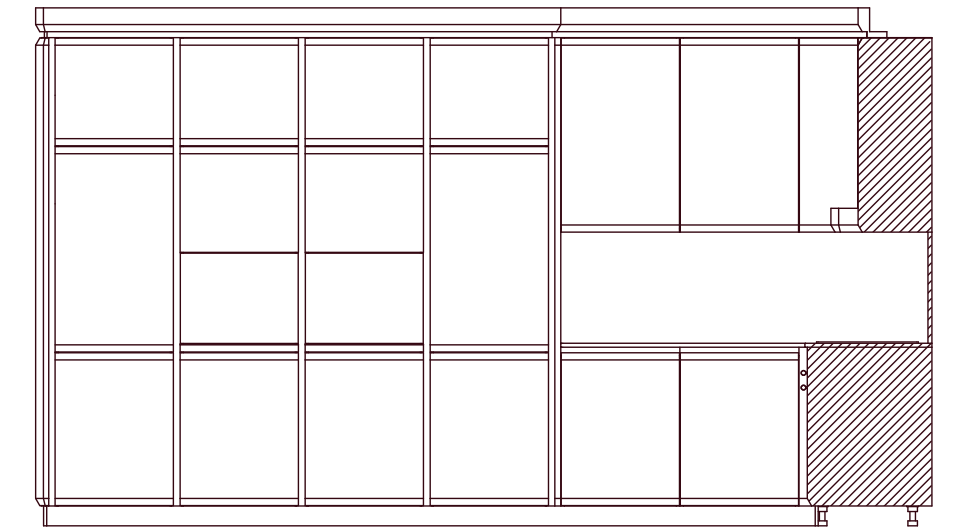
*Il marmo Ming, un materiale
ricercato che racconta una cucina
dalla personalità assolutamente originale.*

*Ming marble is a refined material
that describes the absolutely
original personality
of the kitchen.*



Basi, pensili e colonne
Base, wall and tall units

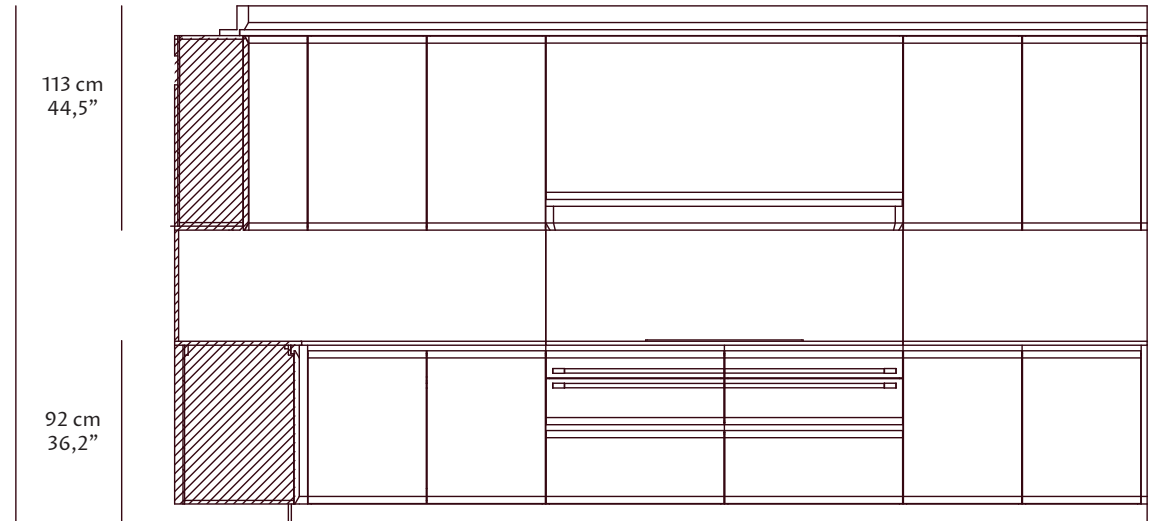
261 cm
102,8"



384 cm
151,2"

Basi e pensili
Base and wall units

261 cm
102,8"



113 cm
44,5"

92 cm
36,2"

423 cm
166,6"

Progetto grigio seta/ebano
Silk grey/ebony project

Anta
Finitura 23 grigio seta e parti in ebano

Struttura
Essenza grey

Marmo
Ming

Cappa
Ebano e laccato colore oro

Maniglia
Ottonata

Profili maniglia
Laccato colore oro

Door
Finishing 23 silk grey and parts in ebony

Structure
Grey essence

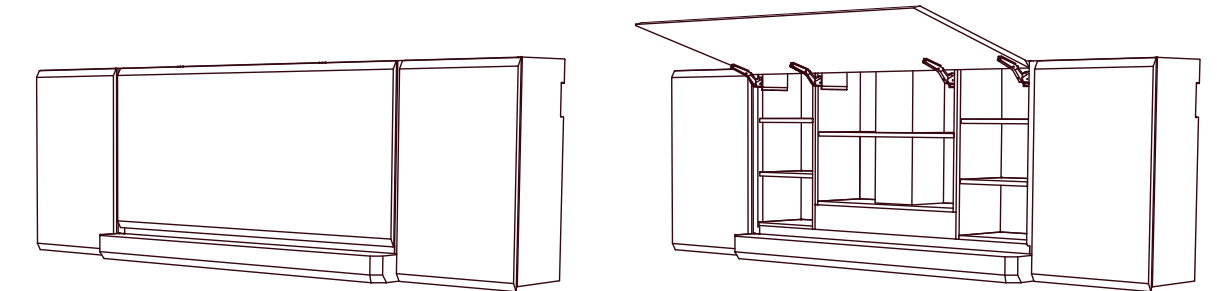
Marble
Ming

Kitchen hood
Ebony and lacquered gold colour

Handle
Brass

Handle profile
Lacquered black colour

Sistema di apertura cappa
Hood opening system



*Tra tradizione e innovazione.
Dettagli dal gusto classico uniti
al design lineare e alle funzionalità
di una cucina contemporanea.*

*Between tradition and innovation.
Details obtained from classic taste
combined with the linear design
and functionality of a contemporary
kitchen.*





Profili sagomati che creano una texture tridimensionale di grande effetto scenografico.
Shaped profiles that create a three-dimensional texture of great scenographic effect.

*Scott è l'emblema della tradizione Prestige
che sa rinnovarsi senza rinunciare alla sua essenza
più autentica, quella del legno.*

*Scott is the emblem of the Prestige tradition
that knows how to renew itself without giving up
its most authentic essence - the wood.*

Il legno si mostra in tutto il suo fascino.
La particolare lavorazione della fiamma del palissandro
richiede una selezione accurata della materia naturale,
oltre che una grande maestria di lavorazione.

The wood appears in all its charm.
The particular processing of the rosewood flame
requires a careful selection of natural material and great
craftsmanship.



I profili in pepe nero lavorati in legno e affiancati l'un l'altro arricchiscono il carattere della cucina.
The black pepper-coloured profiles made of wood, placed side by side, enrich the personality of the kitchen.



La qualità progettuale e le rifiniture della scocca interna completano il design.
The design quality and the finishing of the internal body complete the entire design.



Anche gli interni parlano di un progetto di pregio
che unisce soluzioni pratiche ad un design esclusivo.
The interiors tell us of a prestigious project that combines practical solutions
with an exclusive design.

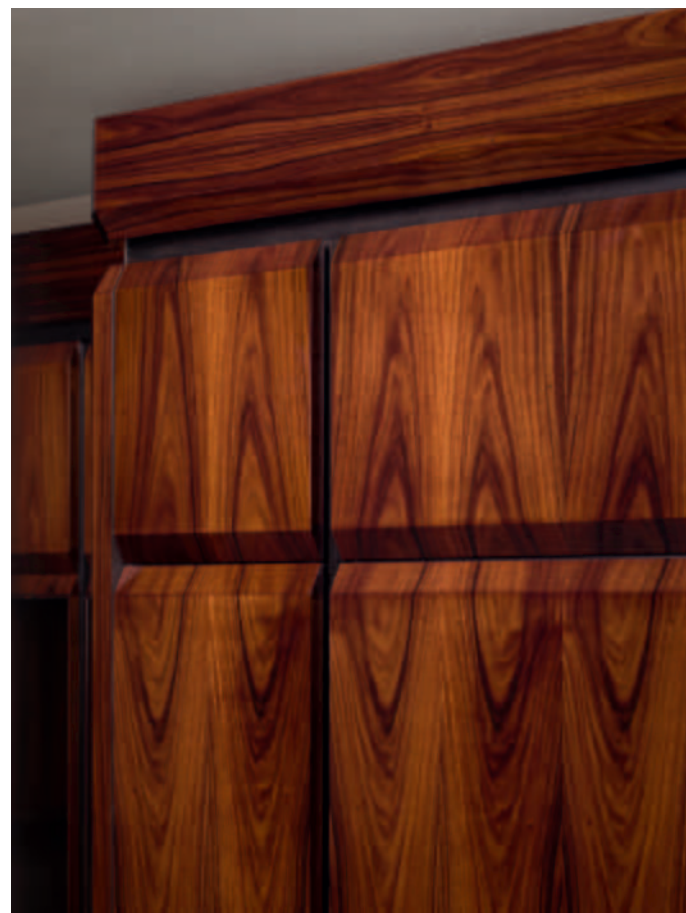
*Superfici in specchio bronzato per una soluzione
d'arredo sofisticata.*

*Bronzed mirror surfaces for a sophisticated
furnishing solution.*

Materiali d'eccellenza vengono accostati in una composizione
d'effetto, dove le lastre in specchio bronzato valorizzano la cucina
dando vita a giochi di luce sulla superficie.

Excellent materials are combined in an impressive composition,
where the bronzed mirror plates enhance the kitchen, giving life
to the play of lights on the surface.



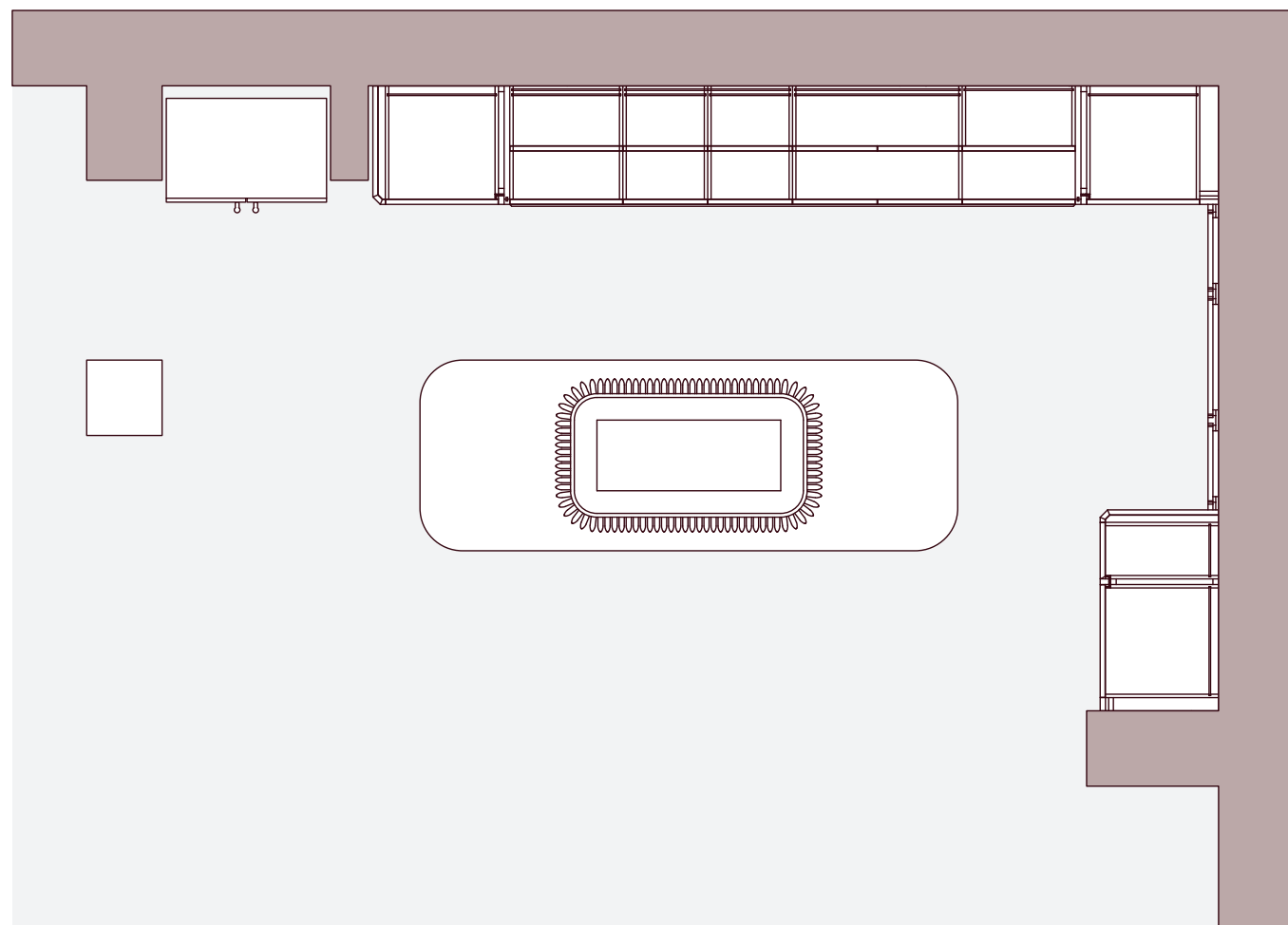


Le venature del legno sapientemente accostate creano un disegno simmetrico ad alto potere suggestivo.
The skillfully-combined wood grain creates a symmetrical design with highly-suggestive power.



Gli interni delle cucine Prestige custodiscono cremagliere in legno per dare libertà nella posizione dei ripiani, in vetro e legno.
Scott's kitchen interiors contain wooden racks to give freedom to the position of the shelves, in glass and wood.





Progetto palissandro Rosewood project

Anta
P02 palissandro lucido

Struttura
73 essenza pepe nero

Marmo
Emperador Dark lucido

Isola e cappa
73 essenza pepe nero

Profili maniglia
73 essenza pepe nero

Door
P02 glossy rosewood

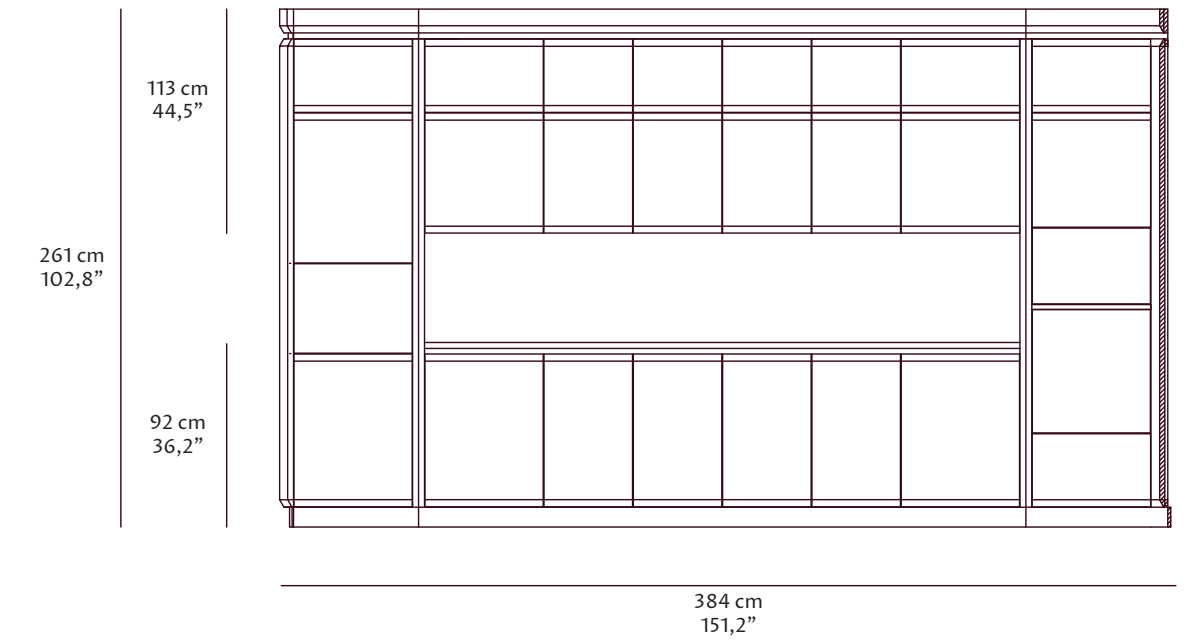
Structure
73 black pepper essence

Marble
Glossy Emperador Dark

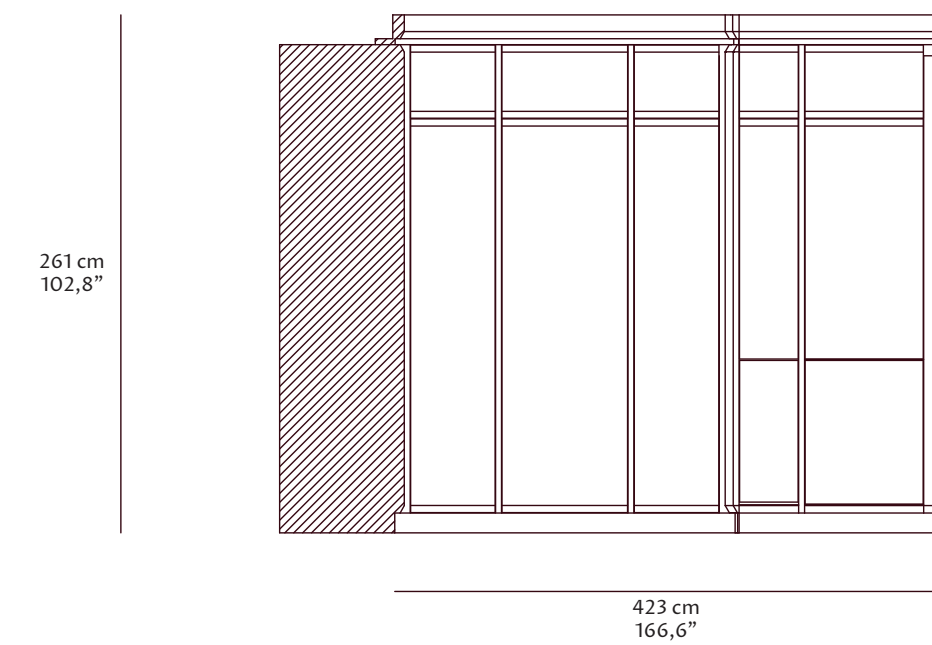
Island base unit and hood
73 black pepper essence

Handle profiles
73 black pepper essence

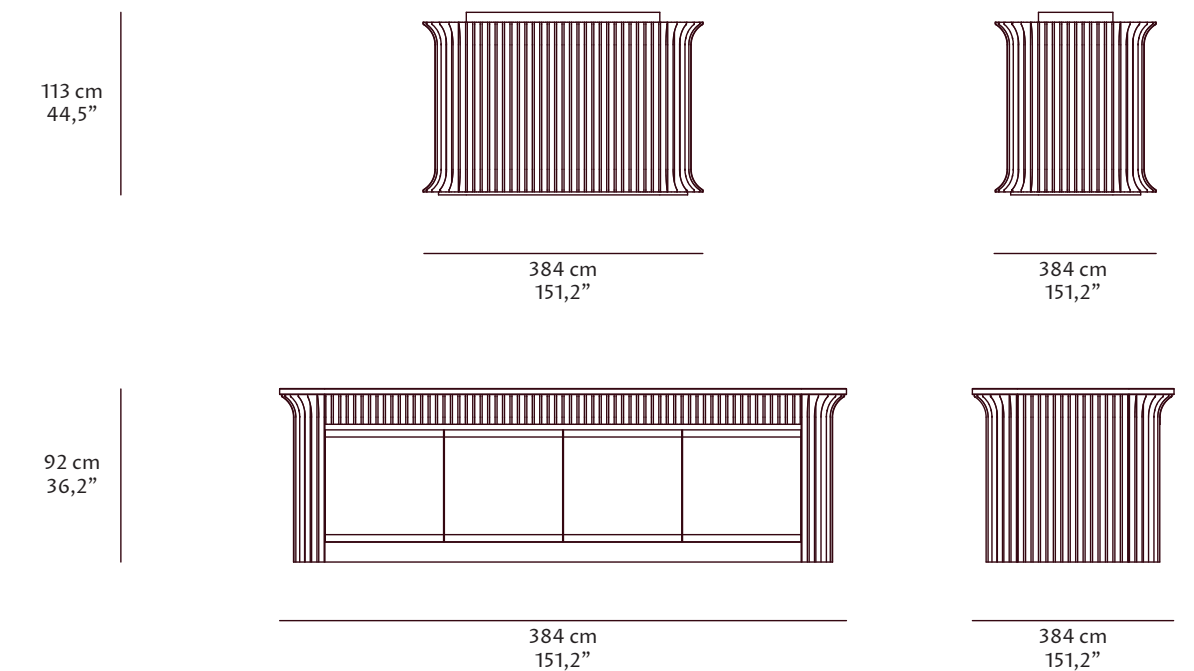
Basi, pensili e colonne
Base, wall and tall units



Colonne
Tall units

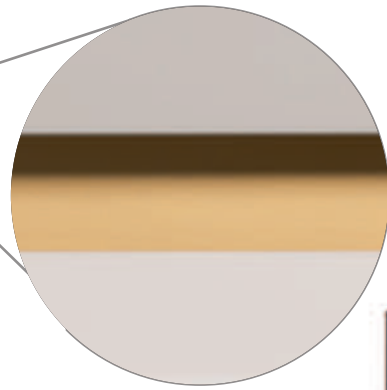


Isola
Island base units

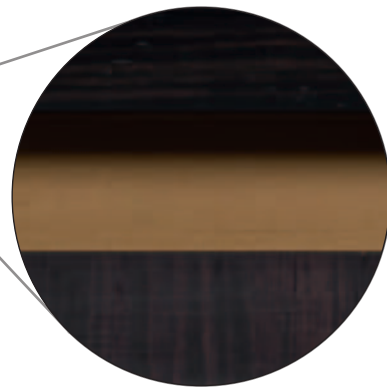


*Finiture
Finishings*

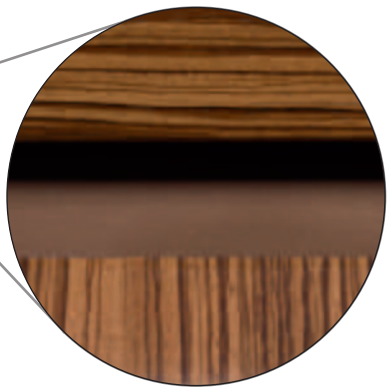
PROFILI MANIGLIA
HANDLE PROFILES



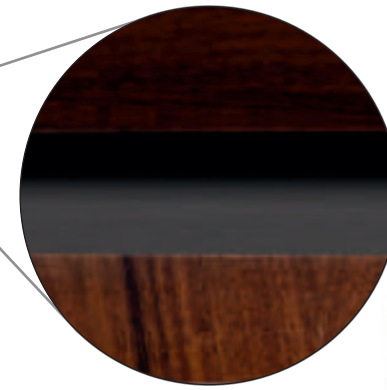
GRIGIO SETA CON PROFILO ORO
SILK GREY WITH GOLD PROFILE
Z3



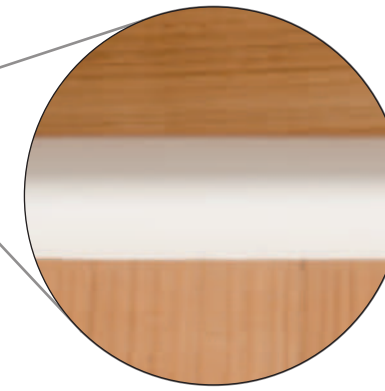
EBANO PRECOMPOSTO COLORE PEPE NERO CON PROFILO BRONZO
PRECOMPOSED BLACK PEPPER EBONY WITH BRONZE PROFILE
EB2



ZEBRANO CON PROFILO BRONZO SCURO
ZEBRANO WITH DARK BRONZE PROFILE
Z01

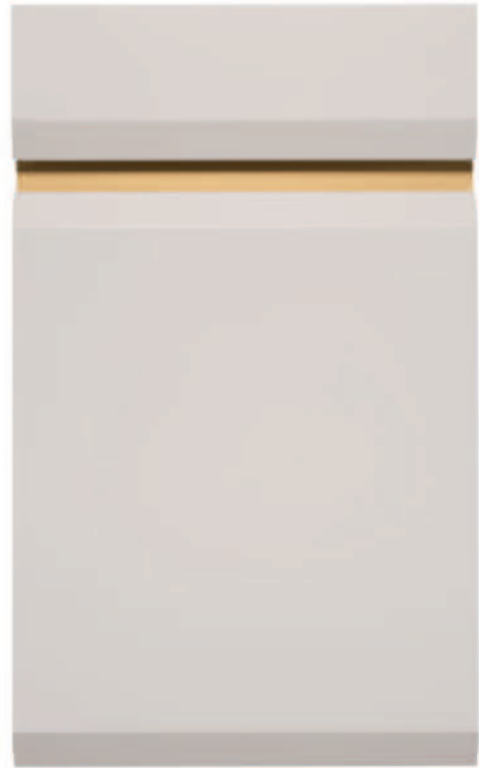


PALISSANDRO LUCIDO CON PROFILO PEPE NERO
GLOSSY ROSEWOOD WITH BLACK PEPPER PROFILE
P02

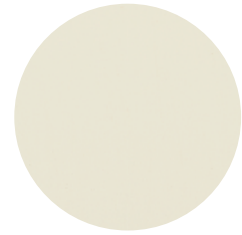


CILIEGIO DO CON PROFILO BIANCO
DO CHERRY WOOD WITH WHITE PROFILE
DON

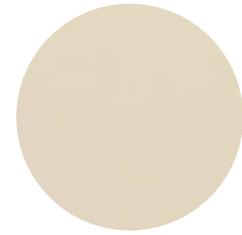
LACCATO PORO CHIUSO
LACQUERED CLOSED PORE



GRIGIO SETA CON PROFILO ORO
SILK GREY WITH GOLD PROFILE
23



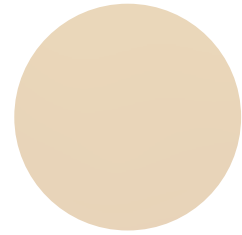
RAL9010
50



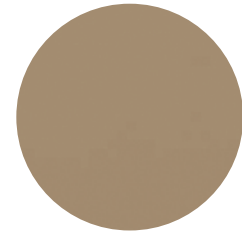
RAL9001
51



AVORIO
IVORY
80



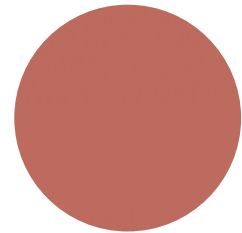
BEIGE CHIARO
LIGHT BEIGE
91



TORTORA
DOVE-GREY
90



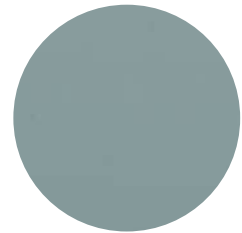
NOCCIOLA
HAZELNUT
87



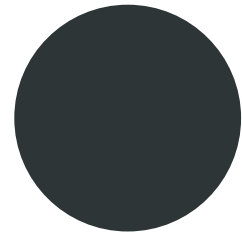
ALBICOCCA
APRICOT
54



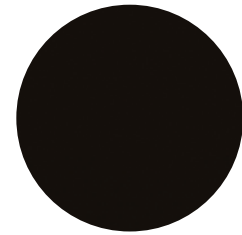
GRIGIO
GREY
20



GRIGIO OLTREMARE
"OLTREMARE" GREY
00N

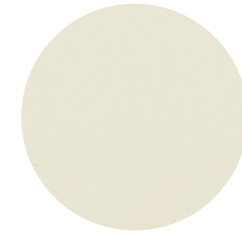


OTTANIO
TEAL
30

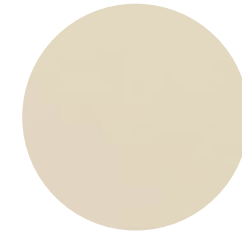


CIOCCOLATO
CHOCOLATE
75

LACCATO PORO CHIUSO PATINATO
LACQUERED CLOSED PORE GLOSSY FINISH



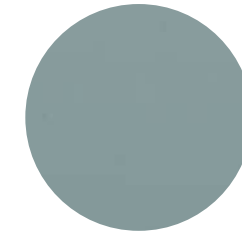
RAL9010
50P
PATINATO/PATINATED



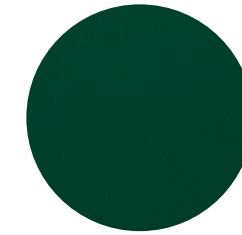
RAL9001
51P
PATINATO/PATINATED



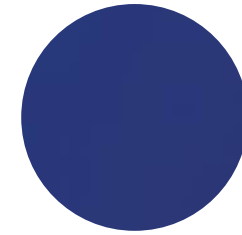
GRIGIO
GREY
20P
PATINATO/PATINATED



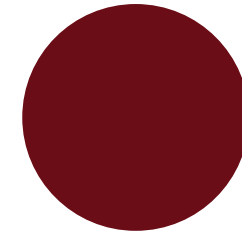
GRIGIO OLTREMARE
"OLTREMARE" GREY
00N
PATINATO/PATINATED



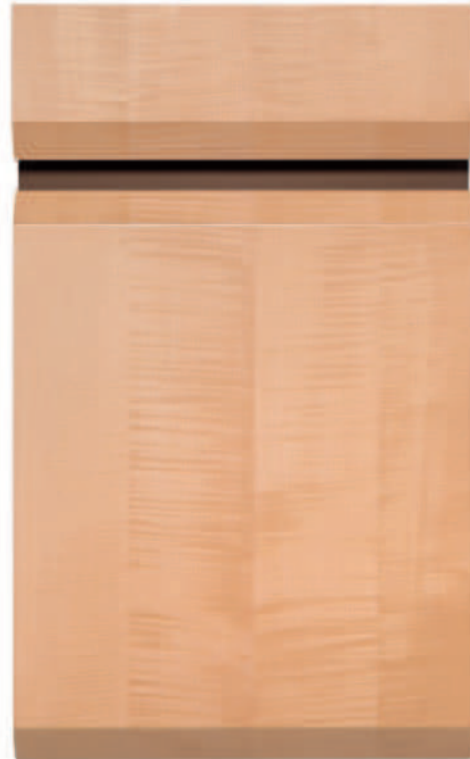
VERDE
GREEN
85
PATINATO/PATINATED



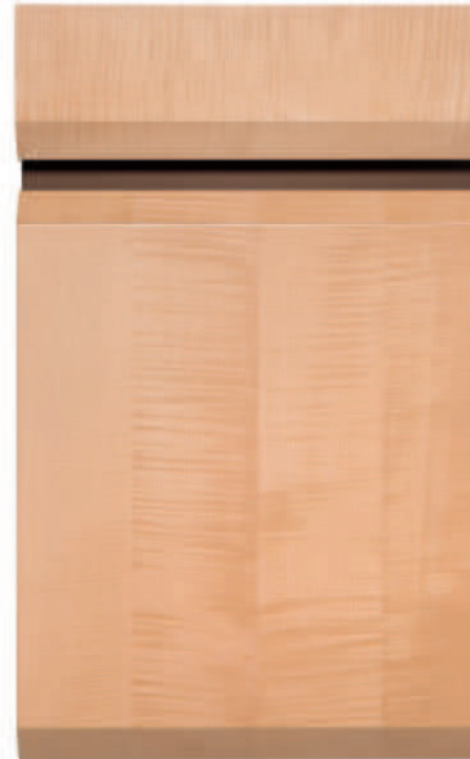
BLU REGALE
ROYAL BLUE
65
PATINATO/PATINATED



ROSSO VENEZIANO
"VENEZIANO" RED
66
PATINATO/PATINATED

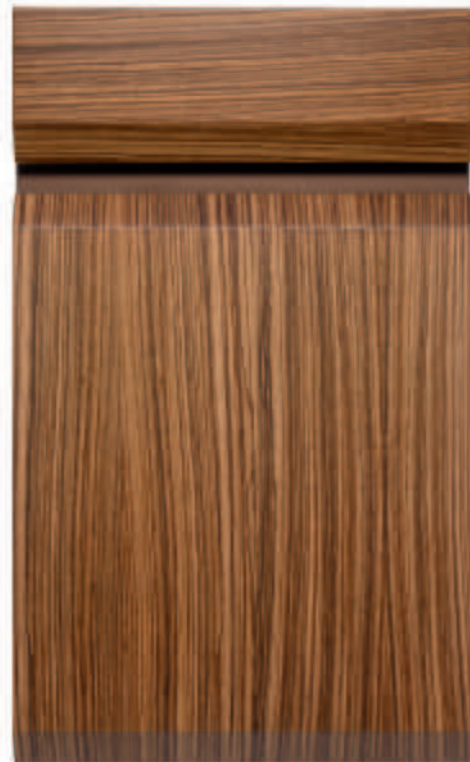


Venatura cassetto orizzontale
Horizontal drawer grain



Venatura cassetto verticale
Vertical drawer grain

ACERO FRISÉ CON PROFILO BRONZO SCURO
FRIZE MAPLE WITH DARK BRONZE PROFILE
AF1



Venatura cassetto orizzontale
Horizontal drawer grain



Venatura cassetto verticale
Vertical drawer grain

ZEBRANO CON PROFILO BRONZO SCURO
ZEBRANO WITH DARK BRONZE PROFILE
Z01

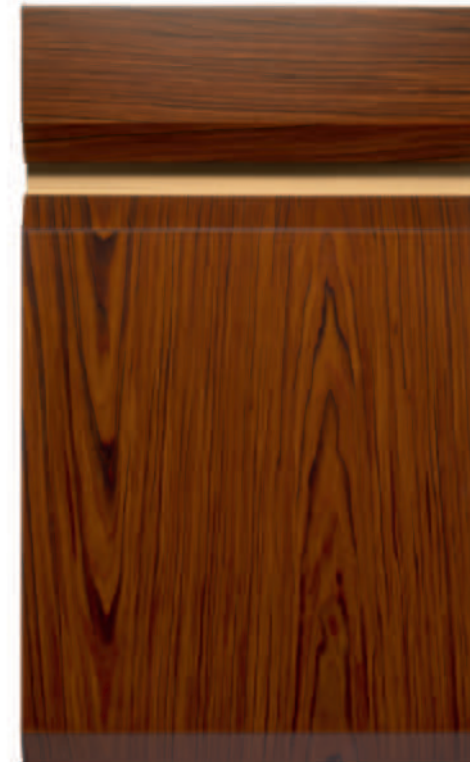


Venatura cassetto orizzontale
Horizontal drawer grain



Venatura cassetto verticale
Vertical drawer grain

NOCE CANALETTO CON PROFILO ORO
NATURAL WALNUT WITH GOLD PROFILE
N4N



Venatura cassetto orizzontale
Horizontal drawer grain



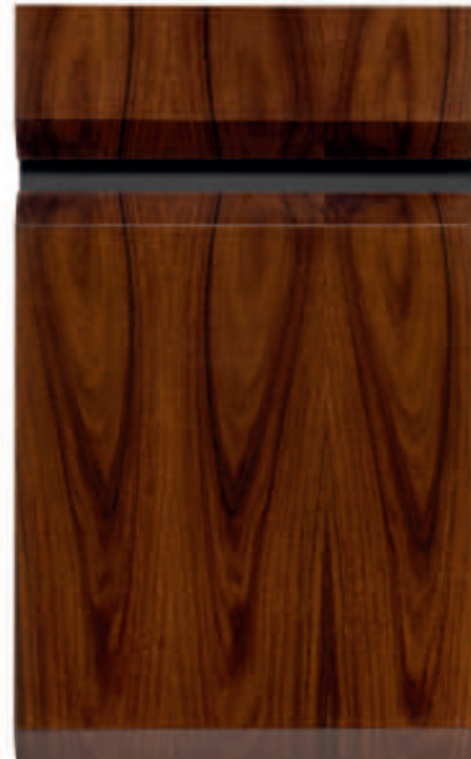
Venatura cassetto verticale
Vertical drawer grain

PALISSANDRO PRECOMPOSTO COLORE T3 CON PROFILO ORO
PRECOMPOSED T3 ROSEWOOD WITH GOLD PROFILE
P01

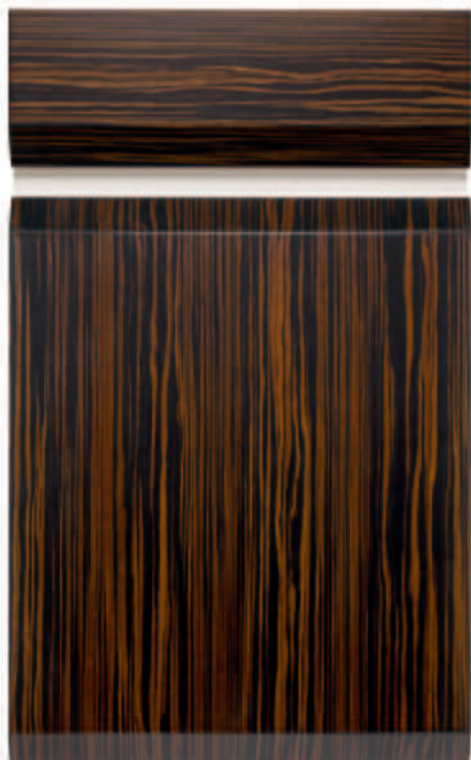


Venatura cassetto orizzontale
Horizontal drawer grain

PALISSANDRO LUCIDO CON PROFILO PEPE NERO
GLOSSY ROSEWOOD WITH BLACK PEPPER PROFILE
P02

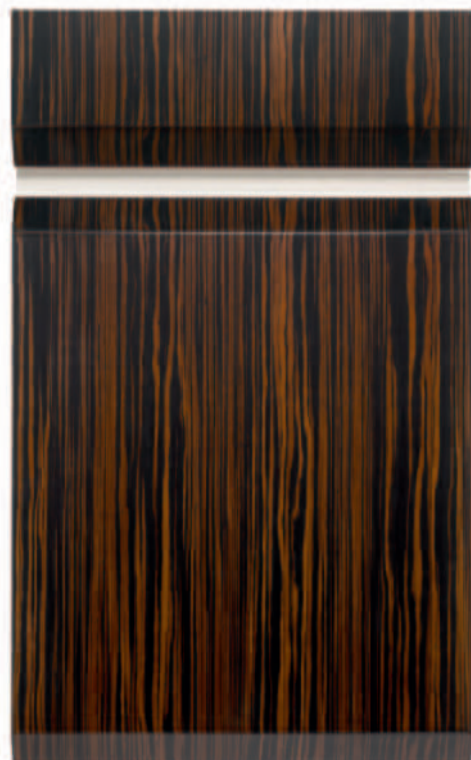


Venatura cassetto verticale
Vertical drawer grain

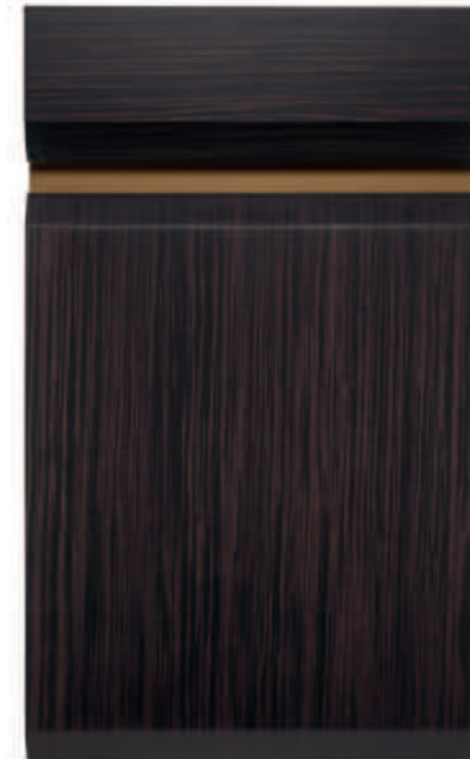


Venatura cassetto orizzontale
Horizontal drawer grain

EBANO PRECOMPOSTO COLORE T3 CON PROFILO BIANCO
PRECOMPOSED T3 EBONY WITH WHITE PROFILE
EB1



Venatura cassetto verticale
Vertical drawer grain

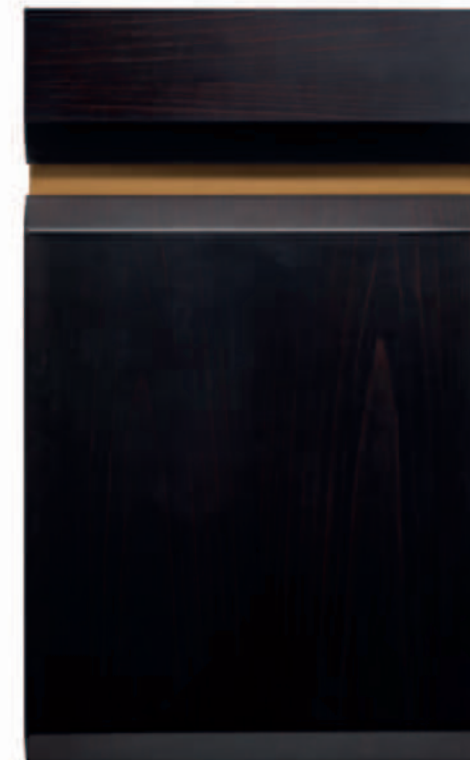


Venatura cassetto orizzontale
Horizontal drawer grain

EBANO PRECOMPOSTO COLORE PEPE NERO CON PROFILO BRONZO
PRECOMPOSED BLACK PEPPER EBONY WITH BRONZE PROFILE
EB2



Venatura cassetto verticale
Vertical drawer grain



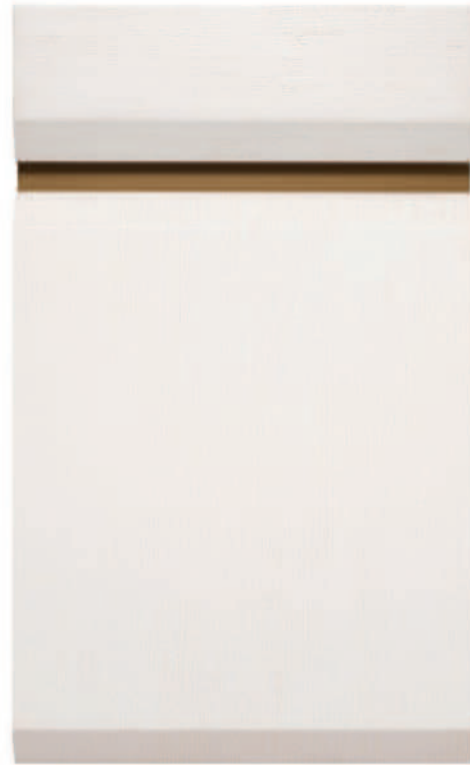
Venatura cassetto orizzontale
Horizontal drawer grain

PEPE NERO SU FAGGIO CON PROFILO BRONZO
BLACK PEPPER ON BEECH WITH BRONZE PROFILE
73

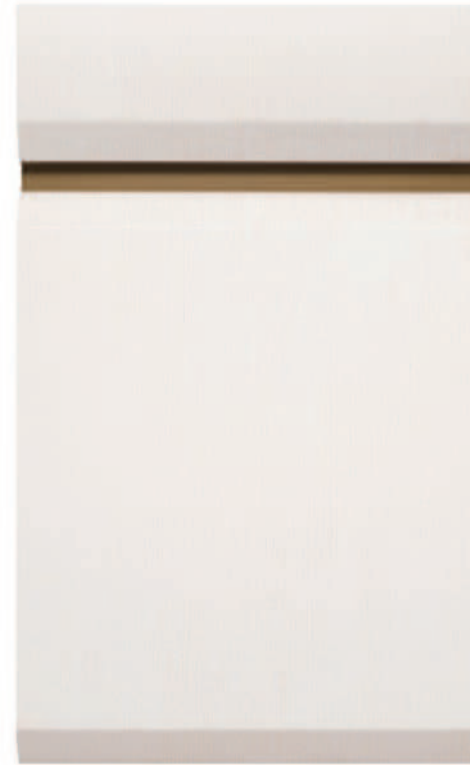


Venatura cassetto verticale
Vertical drawer grain

ROVERE LACCATO PORO APERTO PATINATO
LACQUERED OPEN PORE OAK WOOD PATINATED



Venatura cassetto orizzontale
Horizontal drawer grain



Venatura cassetto verticale
Vertical drawer grain

ROVERE BIANCO CON PROFILO BRONZO
WHITE OAK WOOD WITH BRONZE PROFILE
R64



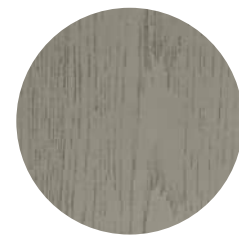
ROVERE AVORIO
IVORY OAK WOOD
R87



ROVERE AVANA
"AVANA" OAK WOOD
R71



ROVERE PERLATO
PEARLED OAK WOOD
R75



ROVERE GRIGIO GRAFITE
GRAFITE GREY OAK WOOD
R67

ROVERE PORO APERTO TINTO PATINATO
OPEN PORE OAK PATINATED STAINED

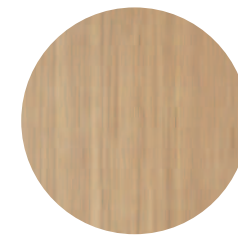


Venatura cassetto orizzontale
Horizontal drawer grain

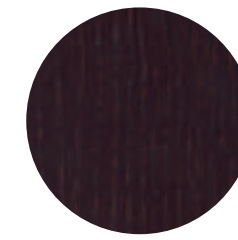


Venatura cassetto verticale
Vertical drawer grain

ROVERE CON PROFILO BRONZO SCURO
OAK WOOD WITH DARK BRONZE PROFILE
R88



ROVERE DO
DO OAK WOOD
RD0



ROVERE TINTA WENGÈ
WENGÈ COLOUR OAK WOOD
RK0



ROVERE TINTA CAFFÈ
COFFEE COLOUR OAK WOOD
R72

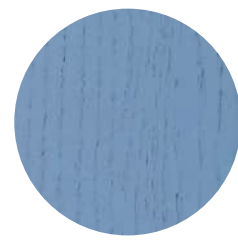
ROVERE PORO APERTO
OAK WOOD OPEN PORE



ROVERE BIANCO RAL 9010
WHITE OAK WOOD
R1N



ROVERE GRIGIO LUCE
GRIGIO LUCE OAK WOOD
R81
SPAZZOLATO/BRUSHED



ROVERE CARTA DA ZUCCHERO
"CARTA DA ZUCCHERO" OAK WOOD
R80
SPAZZOLATO/BRUSHED

FAGGIO SUPERIOR SELEZIONATO TINTO
SELECTED BEECH WOOD SUPERIOR STAINED

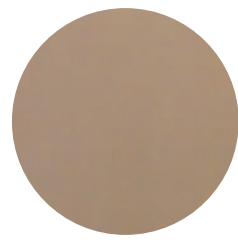


Venatura cassetto orizzontale
Horizontal drawer grain

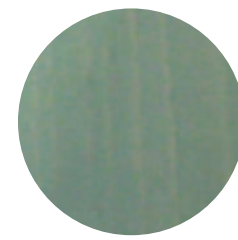


Venatura cassetto verticale
Vertical drawer grain

ESSENZA NOCCIOLA CON PROFILO BRONZO
HAZELNUT ESSENCE WITH BRONZE PROFILE
78P



ESSENZA DESERTO
DESERT ESSENCE
76P



ESSENZA VERDE
GREEN ESSENCE
77



ESSENZA VERDE ARDESIA
ARDESIA GREEN ESSENCE
86P



ESSENZA MOCHA
MOCHA ESSENCE
83



ESSENZA GRIGIO
GREY ESSENCE
74

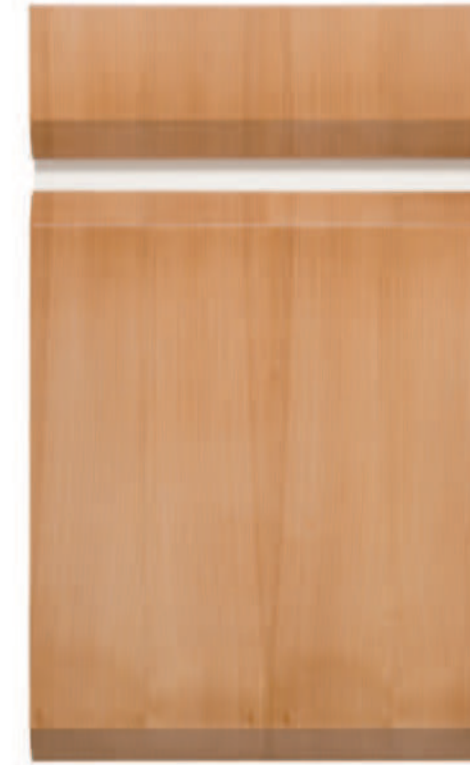


ESSENZA PEPE NERO
BLACK PEPPER ESSENCE
73

CILIEGIO TINTO PATINATO
CHERRY WOOD PATINATED STAINED



Venatura cassetto orizzontale
Horizontal drawer grain



Venatura cassetto verticale
Vertical drawer grain

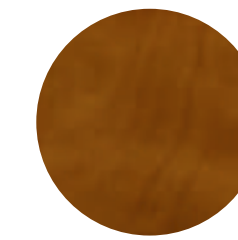
CILIEGIO D0 CON PROFILO BIANCO
D0 CHERRY WOOD WITH WHITE PROFILE
D0N



CILIEGIO CD3
CD3 CHERRY WOOD
D3N



CILIEGIO 2009
CHERRY WOOD 2009
C5N



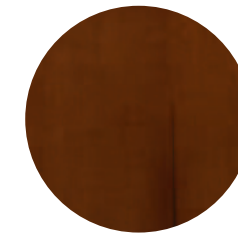
CILIEGIO FRANCESE
FRENCH CHERRY WOOD
C7N



CILIEGIO T3
T3 CHERRY WOOD
T3N



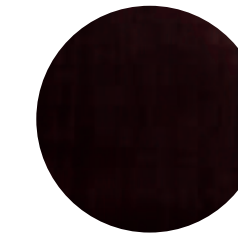
CILIEGIO CHIARO
LIGHT CHERRY WOOD
C3N



CILIEGIO
CHERRY WOOD
C1N



CILIEGIO TINTA MOGANO
CHERRY WOOD MAHOGANY
COLOUR
C9N



CILIEGIO TINTA WENGÈ
CHERRY WOOD WENGÈ
COLOUR
K0N

I colori e le finiture raffigurate in questo catalogo non sono attendibili. Sono solo a scopo illustrativo.
The colors and finishes shown in this catalog are not accurate. They are for illustrative purposes only.

*Un incontro di stile raffinato:
cucina Scott, tavoli e sedie Prestige.*

*A fusion of refined style:
Scott kitchen, Prestige tables and chairs.*

Una selezione ricercata di tavoli e sedie da abbinare alla cucina Scott per completarla, valorizzarla e renderla unica.

A refined selection of tables and chairs to be matched with the Scott kitchen in order to complete it, enhance it and make it unique.

Tavolo-table
CVF086-87
120x120x78 cm
160x160x78 cm
Sedia-chair
CVG046
62x56x81 cm



Tavolo-table
CVF104
250x120x78 cm
Sedia-chair
CVG049
48x48x100 cm



Tavolo-table
CVF105
220x100x74 cm
Sedia-chair
CVG052
45,5x52,5x84 cm



Tavolo-table
CVF101
220x110x76 cm
Sedia-chair
CVG051
53,5x53,5x84 cm
43,5x52,5x84 cm



Tavolo-table
CVF096
150x150x77,4 cm
Sedia-chair
CVG048
49x57,5x92 cm



Tavolo-table
CVF100
240x110x78 cm



Tavolo-table
CVF102
120x120x78 cm



Tavolo-table
CVF099
150x90x75 cm



Tavolo-table
CVF103
250x120x78 cm





Prestige S.r.l. Unipersonale
Via Matteotti, 7
36056 Tezze sul Brenta (VI)
Tel +39 0424 561 315
www.prestigemobili.com
info@prestigemobili.com



Azienda con sistema di gestione qualità
UNI EN ISO 9001 certificato da Certicality.
Il legname acquistato da Prestige proviene
da aziende certificate FSC.

A company with a quality management system
UNI EN ISO 9001 certified by Certicality.
The timber purchased by Prestige comes
from FSC certified companies.

Il catalogo è di proprietà esclusiva di Prestige Srl Unipersonale.
È vietata ogni forma di riproduzione anche parziale. La stampa
tipografica non sempre permette la fedele riproduzione dei colori
e delle tinte rispetto agli originali.

This catalogue is exclusive property of Prestige Srl Unipersonale.
Any form of total or partial reproduction of the catalogue is strictly
forbidden. The printing process does not always permit a faithful
reproduction of colour and tones as compared to the original.

© tutti i diritti sono riservati a Prestige Srl Unipersonale 2017
© all rights reserved Prestige Srl Unipersonale 2017

FOLLOW US!



Graphic design: Vassalli Associati
Printed: Chinchio industria grafica

